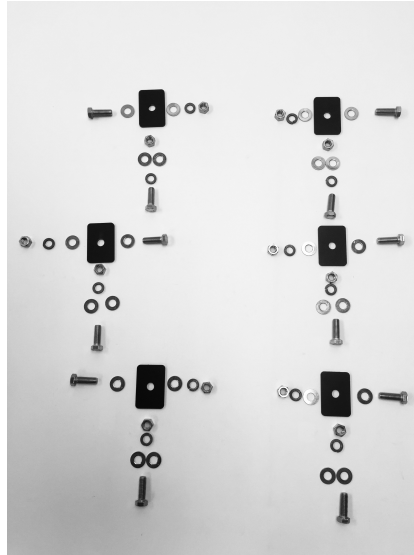


2005+ Tacoma Sliders Installation Guide

Your sliders should contain:

- 1 - Left side slider
- 1 - Right side slider
- 6 - Large Flat Washers
- 1 - Bolt Kit
(BK-OPOR-TACO-20800)
 - 12 - 1/2-13x1 Bolts
 - 12 - 1/2-13 Nuts
 - 24 - 1/2 Washers
 - 12 - 1/2 Lock Washers



Tools needed:

- Metric socket 12mm
- SAE Socket 3/4"
- Box wrench 3/4"
- Pry Tool
- Drill with 1/2" drill bit and pilot bits
- Center Punch

Safety:

Please note that this work should be done by a competent mechanic. If you feel you are not confident to do this work please have a professional mechanic do this installation. Metal-tech Cage, LLC is not responsible for any modifications you make to your vehicle. These instructions are meant to be a guide to assist a competent mechanic.

#1 Always wear safety glasses

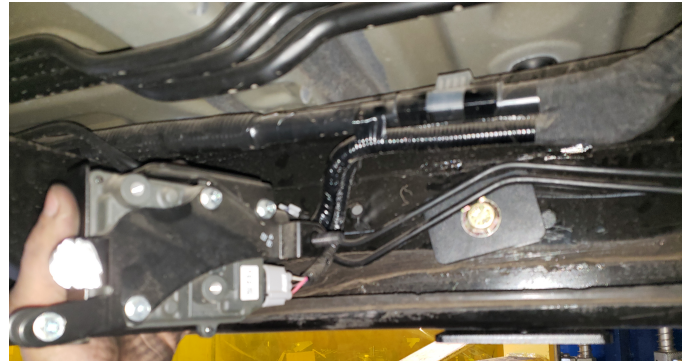
#2 Always chock the opposite end of wheels when working on a vehicle. (ie. Chock the rear when working on the front, and vice versa.)

1. Removal and Prep

- 1.1. Clean off any large chunks of dirt or debris off the frame.
- 1.2. Remove stock running boards if equipped.
- 1.3. Lay each slider next to your truck and visualize where each mount will go on the frame.
- 1.4. Remove any plastic frame hole plugs that may interfere with the slider mounting feet bolting to the frame.
- 1.5. Remove plastic frame end caps where box frame transitions to C-channel, typically on the 3rd Gen Tacomas.
- 1.6. Some models will require a module on the driver side of frame to be loosened and pulled away from the frame for slider foot installation.

2. Driver Side Slider Installation

- 2.1. *Pull any brake lines away from the inside of the frame to make room for slider feet to fit between the lines and frame. Some brackets may need to be loosened or removed.
- 2.2. Lift slider up into place bolting the back foot on to the frame first using a 1/2-13x1" bolt and large washer inside the frame.
- 2.3. Repeat for the front foot.
- 2.4. Loosely install middle foot in place using a large washer and 1/2-13x1" bolt with threads pointing towards the out side of the vehicle.
- 2.5. Tighten all hardware up evenly ensuring slider is snug to the frame.
- 2.6. Verify slider is not touching the body. If needed, loosen bolts slightly to adjust, then retighten.
- 2.7. Reinstall the module on frame that was moved out of the way previously.



3. Passenger Side Slider Installation

- 3.1. Lift slider up into position and install the rear foot against the frame using a 1/2-13x1" bolt and larger flat washer.
- 3.2. Loosely install front foot in place using a 1/2-13x1" bolt and large flat washer.
- 3.3. Loosely install mid foot in place using a 1/2-13x1" bolt and large flat washer.
- 3.4. Verify slider is not touching the body. If needed, loosen bolts slightly to adjust, then retighten.



4. Slider Mounting Reinforcement

- 4.1. Now that your sliders are mounted securely to the vehicle you are able to add reinforcement bolts to each slider foot.
- 4.2. Observe the bottom unused hole on each slider foot plate.
- 4.3. Using a center punch mark each hole on the frame.
- 4.4. Starting with a small pilot drill bit, drill out each hole in the frame, finishing up to a 1/2" hole size.
- 4.5. Install remaining 1/2-13x1" bolts and flat washers just like you did for the other feet bolts.
- 4.6. Tighten all hardware up evenly ensuring slider is snug to the frame.
- 4.7. Reinstall plastic frame end caps and enjoy!



Please contact our technical support if you have any install questions or need any help. Call 503-822-1111 or email info@metaltech4x4.com.

Thank you for your business and enjoy your new sliders! After a short time on the road or trail be sure to check all hardware and tighten if needed.

metaltech^{4x4}
METALTECH4X4.COM