

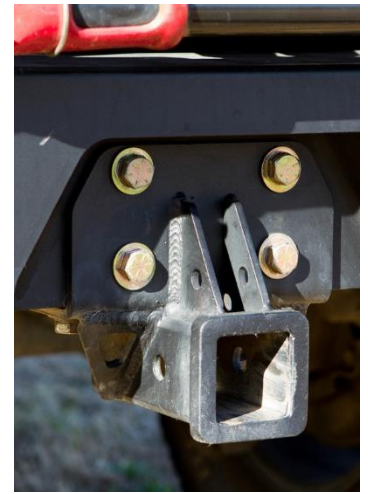
Metal Tech 4x4 Standard & High Tuck Receiver Installation Guide

Standard Parts:

- 1 Standard Receiver
- 1 Bolt Kit (BK-MT-34217)

Tools needed:

- Sockets 3/4", 17mm
- Optional blue thread locker for all threads



Safety:

Please note that this work should be done by a competent mechanic. If you feel you are not competent to do this work please have a professional mechanic do this installation. Metal-tech Cage, LLC is not responsible for any modifications you make to your vehicle. These instructions are meant to be a guide to assist a competent mechanic.

- Always wear safety glasses.
- Always chock the opposite end of wheels when working on a vehicle, chock the rear when working on the front, and vice versa.
- Always use jack stands if the vehicle is to be off the ground. Never work on a vehicle solely suspended by a jack.

All Modifications are done at the owners' risk, check local laws for compatibility.

- Thank you for your purchase! We have taken great pride in our product development and manufacturing. We also use what we make and look forward to the opportunity to see you on the trail! Before you begin your installation take a moment to read through this write up.
- We welcome your feedback on our products and your experience with Metal Tech 4X4. You can reach us toll free at **800-839-0684** Mon-Fri 8:30 AM to 5 PM PST. Or via e-mail at info@metaltech4x4.com

**High tuck receiver intended for light duty use*

1. Installation

- 1.1. [Tool: 17mm socket] Uninstall any bolts from the center of your vehicles frame where hitch will mount.
- 1.2. [Tool: 3/4" socket] Install the Hitch with the provided hardware with the bolt going through the lock washer, washer (bumper if installed), then into the threaded holes in the frame and tighten.

2. Install Metal-tech 4x4 sticker on your truck for 5.3hp gain. Enjoy a beverage and admire your GX470 with its new armor ready for the trails.

3. After 500 miles, use, or time on the trail, check tightness of all hardware.