



Metal-tech, Cage LLC
2700 E 9th St Suite 200,
Newberg OR 97132
metaltech4x4.com 503-822-1111
info@metaltech4x4.com

Metal-tech Fabrication

03-09 GX470 Rear Swing Out Bumper

“Pegasus”

Main Bumper	Accessory Pack (cont.)
Swing arm	1 Stainless Steel Slide Plate
Accessory Pack	1 Spring Loaded Auto Lock
1 Tire Holder/Stinger	2 Upper ¼” Thick Spacers
1 120 lb. Gas Strut	2 Lower “E” ¼” Thick Spacers
1 Latch Plate	1 Swing Out Bearing Kit
1 Stainless Steel Latch	1 Pegasus Bolt Kit
2 HDPE Landing Pads	

Side Wing Support kit no longer required

SAFETY! **Use the appropriate safety devices during installation.** **SAFETY!**
SAFETY! **Wear safety glasses at all times.** **SAFETY!**

Thank you for your purchase of a Metal-tech Fabrication Pegasus Rear Bumper for your GX470. We have taken great pride in their development and manufacturing. We also wheel what we make and look forward to the opportunity to see you on the trail! Before you begin your installation take a moment to read through this write up. There are a few key things noted that will make the installation go smoothly.

- 1.0 Remove old parts and prep for the new:
 - 1.1 Remove stock bumper – IF installed on truck.
 - 1.2 First Remove the door link assembly, then the trim that covers the top of the stock bumper.
 - 1.3 To remove the bumper there are a series of 7 bolts, 4 screws and a clip throughout the fender well, underneath, and the top.
 - 1.4 Once all hardware is removed grasp the outer corner on the wheel well portion and pull it back away from its snap fit mounts. It does take some force to pull it off the truck.
 - 1.5 Remove factory pull point on the left side

Pegasus Installation

- 2.0 Check frame for excessive weld splatter above and below the frame corners. Toyota is inconsistent with the finish since this is usually hidden under layers of plastic. Since we are installing steel directly to these points for strength, the presence of weld splatter can affect the installation of your new bumper. IF there is excessive weld splatter or welding wire lying on the frame where your new bumper mounts remove it with a file or grinder.

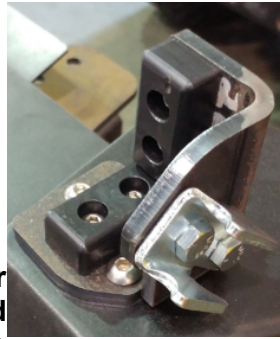
3.0 Install the latch mount, landing pads, latch hook, gas strut ball mounts, auto lock, and the stainless steel slide plate as shown in images below.

3.1 HDPE Landing Pads use 1/4" hardware

3.2 Latch Plate, Latch, and Stainless Plate use 5/16" Hardware

3.3 Gas strut balls mount to bumper near the pivot point and the 3-hole mount on the swing out beam.

*** Now is the time to install any other accessories such as the Outpost Offroad Flange Mount LED Lights, CB antenna, Step Mounted Running/Step Lights, etc - available at metaltech4x4.com**



4.0 Install Main Bumper.

*NOTE: Loosely bolt to the frame so it can be adjusted once all the bolts and spacers have been installed.

- 4.1 With the help of a friend, lift the bumper onto the truck. **(Be careful not to scratch your truck!)**
- 4.2 Align the center holes and install the provided 12mm bolts, lock washers and washers.
- 4.3 Use the lower “E” spacer (looks a bit like an E. The two holes will match the two round inside holes on the lower flange mounting point for the bumper.
- 4.4 Use the provided ¼ spacers on top of the frame (silver in picture)
- 4.5 Install the 12mm bolts, lock washers and washers into the bottom of the frame with the 3/8 bolts, **washers**, lock washers, and nuts through the lower and upper mounting holes in the bumper. (shown without washers, must install washers!)
- 4.6 Once all is installed loosely, align bumper to desired position and tighten all mounting hardware.



5.0 Install Swing Arm

- 5.1 Hand pack grease (moly or lithium wheel bearing grease) into the two tapered radial bearings.
- 5.2 Wipe any manufacturing dust from the pivot shell at the end of the swing arm. Lightly pre-grease the inner races. (Note we have already installed the inner races for you inside the pivot shell)
- 5.3 With the swing arm upside down drop large radial bearing into pivot shell on swing arm. NOTE: make sure the taper of the bearing is facing the taper of the race already in the shell.
- 5.4 Tap pivot lip seal into place on top of the large radial bearing. (Tip put a little grease on the outer part of the seal can so it seats easier) Use caution to seat the seal evenly, unevenly can damage the seal rendering it worthless and require replacement. (Metal-tech Fabrication stocks replacement parts for all components)
- 5.5 Install Latch to the end of the swing out arm as shown in step 3.3 **(use the ¾ long bolts)**
- 5.6 Install swing arm on to the pivot. Drop in upper smaller tapered radial bearing, washer then castle nut. Lift swing arm up and down a bit to help the tapered bearing seat into the race. Tighten the nut firmly but still allowing the pivot to swing.
- 5.7 Close the swing arm and adjust the latch U bolt so it pulls down and locks swing arm in place.
- 5.8 Tighten castle nut then back spindle nut off a ½ turn and install cotter pin.

5.9 Install grease cap tapping it into place with a rubber mallet may be necessary.

*** TIP: Once aluminum grease cap is in place, paint it with Rust-oleum Textured Black #7220830 so it matches the bumper.**

5.10 Install tire stinger into clamp on swing arm. **WARNING!** IF the stinger is mounted too far back IT WILL HIT THE BACK DOOR OF YOUR TRUCK AND DAMAGE YOUR DOOR. Use caution as you do this step. The best thing to do is measure the true back spacing needed for your tire/rim combo.

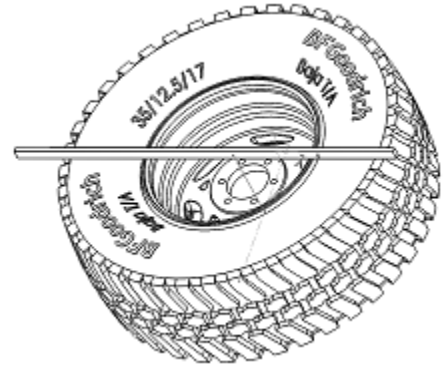
5.10.1 Lay your spare tire face down on the ground.

5.10.2 Place a flat edge across the tire from one side to the other sitting on the rubber.

5.10.3 Measure the distance from that flat edge to mounting flange of the rim.

5.10.4 This is the maximum offset you need for the stinger adjustment. You do want the inside rubber of the tire to touch the swing arm face. So, subtract ½” from the offset number you got and use that.

5.11 Install the stinger and clamp down so the face of the stinger is the distance to the front of the swing arm, you got to set your offset to.



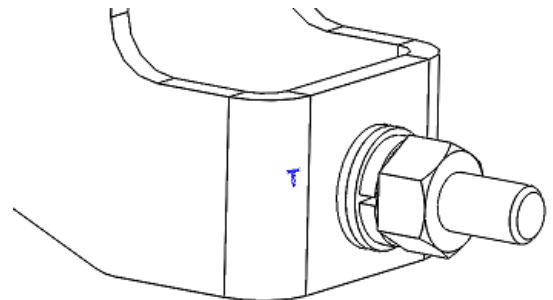
WARNING!!!! SLOWLY CLOSE your swing arm checking that the back of the stinger does NOT contact the back door. Damage to your truck can happen if you do not use caution. If needed, shorten the stinger tube by cutting it down.

6.0 **Install Hi-lift** mounting points. These are the lower mounts on the swing arm. They are oblong to allow for adjusting the fit for your Hi-lift jack you use. First bolt the bolts into place then check that your Jack fits over them. Adjust if needed.

6.1 NOTE: Remove the bottom foot on your hi-lift, most are on a pull pin and go off and on really easy. Store the foot and pin inside your recovery bag inside the truck. (you will have that bag out if you ever need to use your jack anyway)

6.2 Bolt facing to away from truck, use one flat washer under the head of the bolt as TWO stacked with a lock washer and a nut on the other side. \

6.3 The remaining threads of the two bolts are the mounting studs for the Hi-lift to hang from. The end of the jack with the mechanism goes to the right of the truck. Use the two remaining nuts to secure the jack to the studs.



***The following instructions are for the optional accessories available at www.metaltech4x4.com.**

7.0 Install Utility Rack onto swing arm with provided ½ hardware.

8.0 Install Fuel can holders using the supplied hardware

8.1 Align the bolt pattern of the utility rack with the accessory of your choosing and install the provided hardware.

8.2 The 2 front center bolts are used to mount the provided license plate holder.

8.3 Use the provided hardware or the pair of License Plate Bolt Lights to install the license plate onto the mount.

9.0 Install Metal Tech sticker and you're ready go

10.0 Once you have driven about 100 miles with the bumper on the truck, torque all the bolts. Give special care to the frame bolts on the left pod.

We welcome your feedback on our products and your experience with Metal-tech. You can reach us toll free at 800-839-0684 Mon-Fri 8:30 AM to 5 PM PST. Or via e-mail at info@metaltech4x4.com



Metal-tech, Cage LLC
2700 E 9th St Suite 200,
Newberg OR 97132
metaltech4x4.com 503-822-1111
info@metaltech4x4.com

Metal-tech 4x4

Pegasus Swing Arm Sealing Guide

- Thank you for your purchase! We have taken great pride in our product development and manufacturing. We also use what we make and look forward to the opportunity to see you on the trail! Before you begin your installation take a moment to read through this write up.
- We welcome your feedback on our products and your experience with Metal Tech 4X4. You can reach us at 503-822-1111 Mon-Fri 8:30 AM to 5 PM PST. Or via e-mail at info@metaltech4x4.com

Rear Swing Out Bumper Swing Arm Sealing Guide

1. Your rear accessory package should have contained a tube of black silicone. This is used to fully seal the arm from moisture getting inside.
2. Start by reading all of the manufacturers safety and usage information provided on the packaging.
3. Next open the tube and use the pointed tip to apply a bead of sealant to the spot where the end cap and the arm meet underneath the latch mount
4. Read Step 5 First Also Apply a bead of sealant to the area that the washers will contact the swing arm where the accessories/license plate holder mounts.
5. Install the appropriate/desired accessory onto the swing arm and repeat the seal on the washers for it.
6. Remove any excess sealant for a cleaner look.
7. Once the arm has been installed, but before grease cap, apply a bead of sealant to the hub and cap then install cap. Wipe away excess or wait for it to set up and cut away excess.



Safety: Please note that this work should be done by a competent mechanic. If you feel you are not competent to do this work please have a professional mechanic do this installation. Metal-tech Cage, LLC is not responsible for any modifications you make to your vehicle. These instructions are meant to be a guide to assist a competent mechanic.

- **Always wear safety glasses.**
- **Always chalk the opposite end of wheels when working on a car, Chalk the rear when working on the front, and vice versa.**
- **Always use jack stands if the vehicle is to be off the ground. Never work on a vehicle solely suspended by a jack.**

All modifications are done at the owners risk, check local laws for compatibility

We welcome your feedback on our products and your experience with Metal-tech. You can reach us toll free at 800-839-0684 Mon-Fri 8:30 AM to 5 PM PST. Or via e-mail at info@metaltech4x4.com