

Metal Tech 4x4/PRP Seat Bracket Install for FJ Cruiser

Parts:

4	Middle Seat Brackets
2	Left Side Front Bracket
2	Right Side Front Bracket
2	Left Side Rear Bracket
2	Right Side Rear Bracket
2	Side Cover Plates
1	OCS Mounting Plate
24	3/8" Carriage Bolts
24	3/8" Lock Washers
24	3/8" Flat Washers
24	3/8" Nuts
8	7/16" Bolts
16	7/16" Flat Washers
8	7/16" Lock Washers
8	7/16" Nuts
8	5/16" Bolts
8	5/16" Lock Washers
16	5/16" Flat Washers
8	5/16" Nuts
2	1/4" Bolts
4	1/4" Flat Washers
2	1/4" Lock Washers
2	1/4" Nuts
4	10-24 Machine Screw
12	10-24 Flange Nut
4	#10 Flat Washer

Tools Required:

- Screw Drivers – Flathead and Philips
- T40 Star Socket (Specialty Tool)
- Metric Sockets and Wrenches
- Standard Sockets and Wrenches
- Needle Nose Pliers
- * Wire Cutters
- * Soldering Iron
- * Shrink Wrap and Heat gun or use electrical as a substitute

* This is only required if your FJ Cruiser has passenger side air bags using the vehicle occupancy sensor module not made by Metal Tech 4x4.

SAFETY: Please note that this work should be done by a competent mechanic. If you feel you are not competent to do this work please have a professional mechanic do this installation. Metal-tech Cage, LLC is not responsible for any modifications you make to your vehicle. These instructions are meant to be a guide to assist a competent mechanic.

Thank you for your purchase of Metal Tech 4x4 FJ Cruiser Aftermarket Seat Bracket System. We have taken great pride in developing an easy solution for those that want the best comfort off road and on road. We also wheel what we make and look forward to the opportunity to see you on the trail! Before you begin your installation take a moment to read through this write up. There are a few key things noted that will make the installation go smoothly.

Installation:

*Note that the process to remove and to re-install the seats are the same for both passenger and driver side. The only difference between the two seats will be the vehicle occupancy sensor on the passenger side and the hal sensors on the driver side which are already integrated into the seat slider tracks.

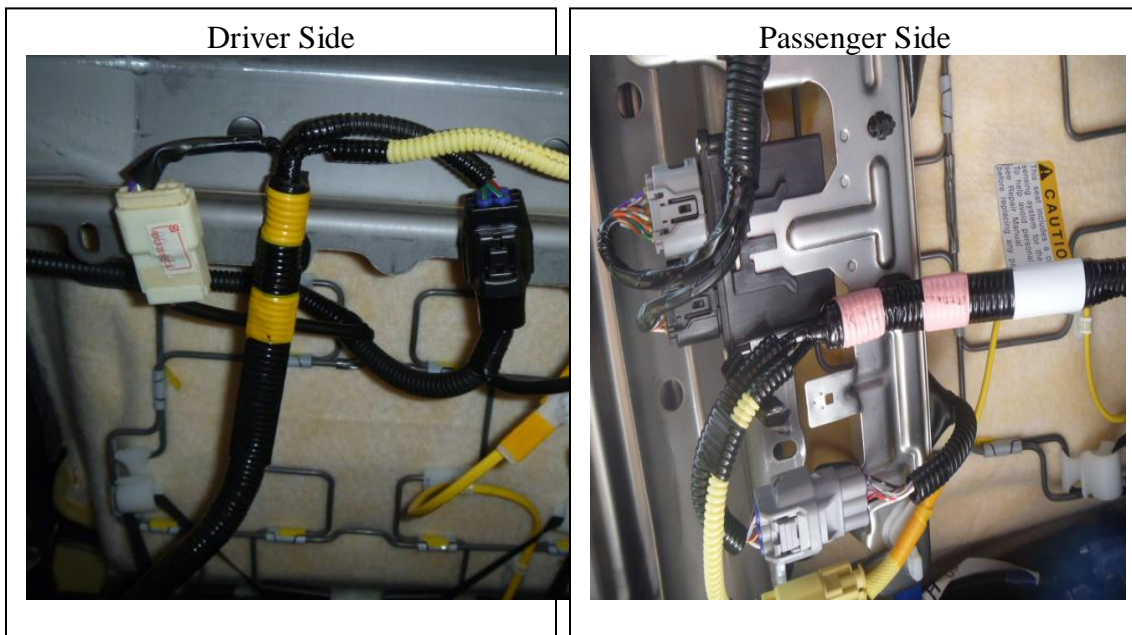
1. Remove the ground cable from the battery and keep it off until you are finished with the install
2. Remove the factory floor mats and with a flat head screw driver pop the caps off that cover the bolts for the factory slider track



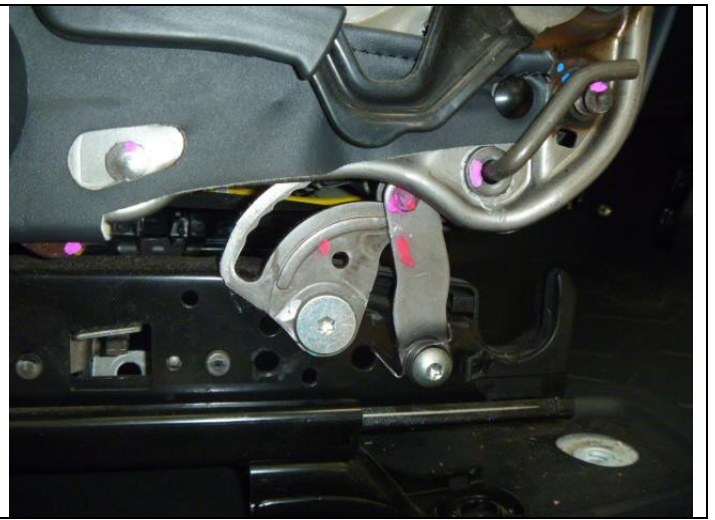
3. On the side of the seat there will be a plastic cover that will need to be removed with a Phillips screw driver. Next use your flat head screw driver to pry the plastic cover off the side of the seat



4. Next remove the 4 bolts that hold the seat in place on the floor
5. Lay the seat back and you will see wiring that is attached to the seat slider tracks. You will need to disconnect the wiring from the seats for both sides.



6. After the wiring is disconnected you can safely remove the seat from your FJ Cruiser. Using your T40 star socket you will begin to remove all the hardware that attaches the seat to the slider track system including the seat belt mounts. The cross brace that holds the wiring will be discarded, you will however keep the support bracket on the passenger side rear as it is part of the mounting system.



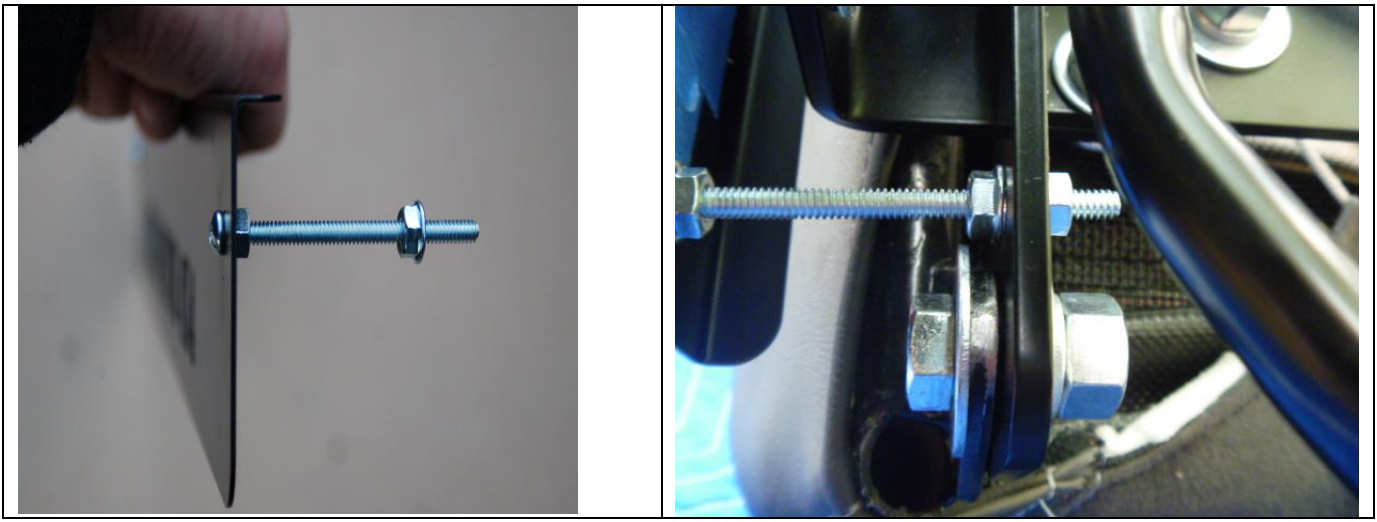
7. Once all the hardware has been removed you can now start to assemble the Metal Tech FJ Cruiser Seat Bracket system onto the FJ Cruiser slider tracks. First you will want to pre-assemble the front and rear mounts loosely with the 3/8" carriage bolts. You will have the carriage bolt on top with a flat washer, lock washer and nut on the bottom



8. Next assemble the mounting plates onto the FJ Cruiser slider track system loosely. You will be using the 5/16" bolts for the front mounting plates and the factory hardware for the rear mounting plates. For the passenger side mount the vehicle occupancy sensor tab using the small 1/4" bolts to the front of the mounting bracket as shown in the picture below.



9. After the brackets are loosely bolted onto the slider track you can now move onto the vehicle occupancy sensor wiring. Please refer to the manufacturer's instructions that are provided on how to properly wire the module. *Metal Tech 4x4 assumes no liability for the vehicle occupancy module if you choose to use one. If there are any issues or defects please refer to the manufacturer for any problems or concerns.
10. Once the wiring is completed for the vehicle occupancy sensor you can now bolt in the slider tracks back into your FJ Cruiser. Clip the vehicle occupancy sensor onto the tab provided by Metal Tech and reconnect the wiring on the driver side for the hal sensors.
11. With all the bolts still loose, take your PRP seat and bolt it in place on the mounting tabs. At this point you can tight down the bolts for the PRP seat to set the adjustment for the seat brackets.
12. Next start to tighten all the bolts on the side of the slider track system. Once completed finish tightening the 3/8" carriage bolts from underneath and this will align everything properly.
13. Now that the seats are in place, make sure the seats can slide back and forth with ease. If not you may need to play with the adjustment on the seat brackets to ensure everything is square.
14. The final installation is the side cover plates. You will have the 4 10-24 x 2.75" long machine screws. Pre-assemble the machine screw onto the side plate using one of the flange nuts. Next set the adjustment of how far you want the side plate to stick out by adjusting the second flange nut that will mount to the seat mounting bracket. Place the side cover plate onto the seat mounting bracket and fasten the remaining flange nut on the backside.



15. Re-connect the ground cable on your battery. Turn the ignition on and check you dash for the air bag light. With the OCS module you will have a manual over ride switch that will turn on and off your passenger side air bag. Make sure that the light turns on and off. Once that is completed you are done!